



## 2GIG Replacement Battery Guide for 2GIG® Security Panels

### 2GIG-Battery-GC3

The 2GIG Battery is used in 2GIG GC3 and GC3e Control Panels.

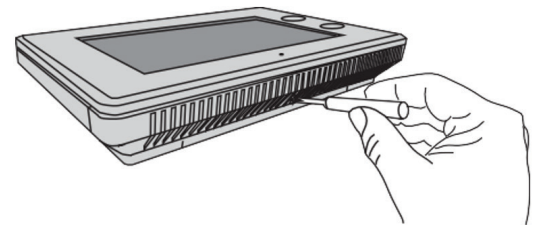
This guide will provide you the steps involved in the removal and replacement of the 2GIG-Battery-GC3 panel backup battery. In some cases, your panel may vary slightly from the one applied in this guide.

**IMPORTANT:** This procedure should only be performed by professional installers/dealers, and it is not a procedure recommended that general control panel users attempt.

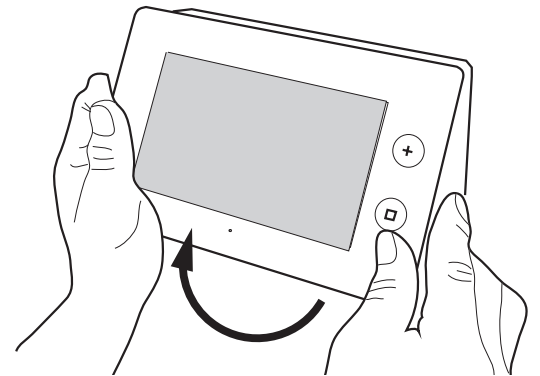
### REMOVING THE EXISTING BATTERY on GC3/3e/SP1 Panel

#### 1. Separate panel from backplate

- a. Loosen the screw on the bottom of the panel until you feel resistance. This screw is designed to be loosened and not removed.

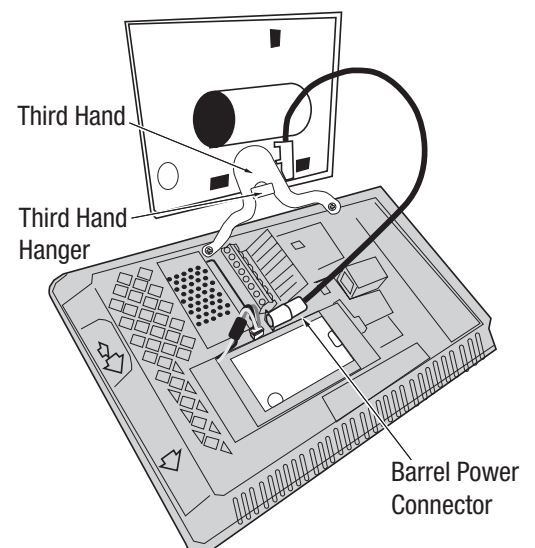


- b. Remove panel from mounting backplate.



- c. Hang the panel by using the THIRD HAND strap hanger located at the bottom-center of the mounting plate.

**NOTE:** It is not recommended that you attempt to remove the battery while the GC3 panel is mounted or attached on the wall.



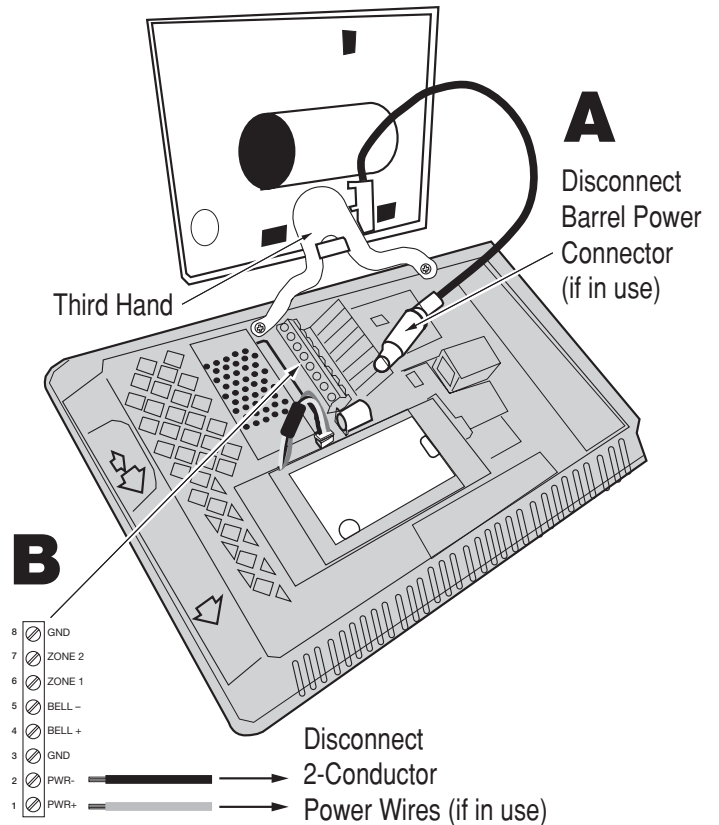
## 2. Disconnect Power from the panel

- a. **Barrel Connector: (A)** Disconnect the power supply from the outlet. Remove the barrel connector plug from the barrel jack on the panel.

**NOTE:** If a sounder or other wire connections are attached, disconnect them as well. Note the connection points in the terminal block.

OR

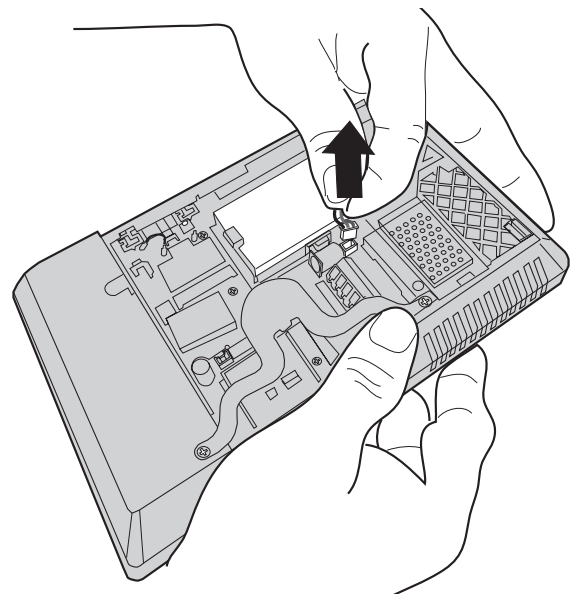
- b. **Terminal Block: (B)** Remove 2-conductor power wire from the PWR+/PWR- screw positions on the panel's terminal block.



3. Remove the panel from the wall by detaching the THIRD HAND strap from the hanger.

- a. Place the control panel onto a flat surface with the front facing downward, taking care not to scratch the front panel surface.

4. Disconnect the wired battery pin connector from the PCB battery connector port. The connector is located directly behind the DC power adapter barrel jack.



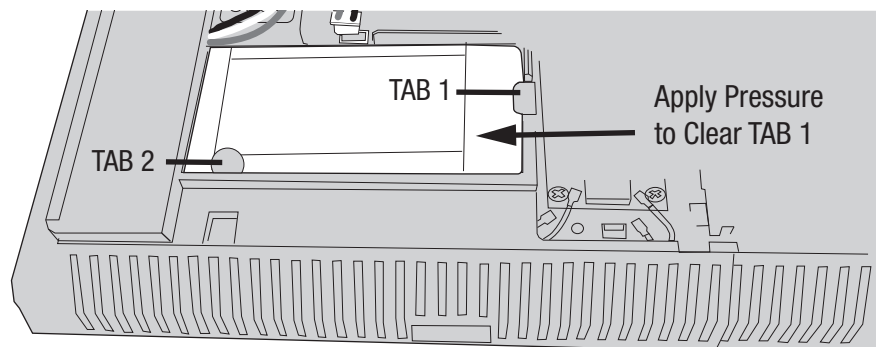
## REMOVING THE EXISTING BATTERY

Gently push the battery away from the side TAB 1, and lift the battery out once the battery edge has cleared TAB 1.

**NOTE:** Avoid using excessive force to prevent breakage of the TABS. Do not use any tools or sharp instruments in order to avoid damaging the panel or puncturing the old battery.

If needed, try pulling away from TAB 2 while lifting the battery out in order to clear both tabs.

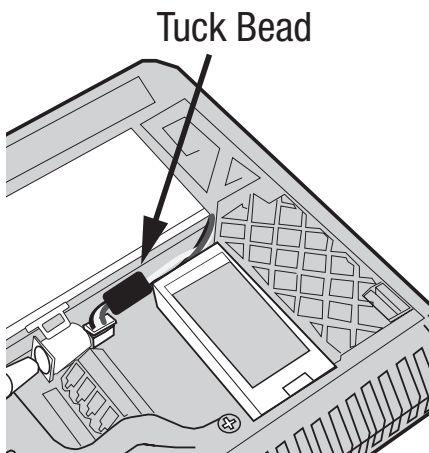
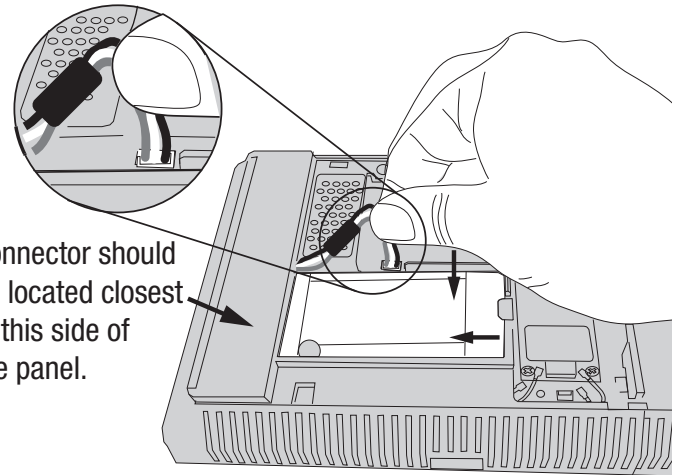
**NOTE:** Some earlier panel versions may not have TAB 2.



## INSTALLING the NEW BATTERY

Be careful when handling the battery to avoid scratching the surface. Scratches on the battery could render the battery not useable. Contact Nortek Control Customer Support to assist with a replacement.

1. Take the new battery, and ease it into the panel back into position clearing TAB 2 then sliding the battery under TAB 1.
  - a. The connection wire should be closest to the side tab, adjacent from Tab 2.
2. Reattach the wired battery pin connector to the PCB battery connector port.
  - b. Tuck the wire and ferrite bead in the channel alongside the battery so it sits below the surface of the battery.



**IMPORTANT:** Be certain that the ferrite bead is properly seated next to the battery connector terminal to prevent damage to the battery or the back panel from closing properly.

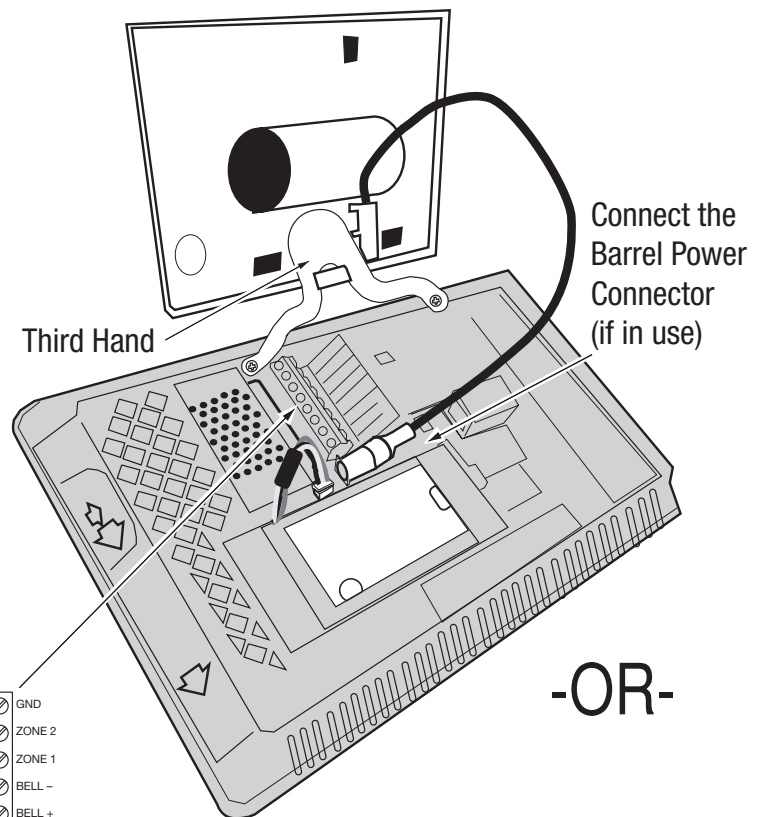
3. Re-attach the THIRD HAND and hang the panel on the wall

**NOTE:** SKIP this step if your panel is not mounted.

4. Re-attach any connectors back to the terminal block if removed when removing the panel from the wall.
5. Reconnect Power
  - a. Re-attach the barrel connector to the barrel jack on the panel if this power option is used.

OR

- b. Re-attach the 2-conductor power wires to the PWR+ /PWR- screw positions on the panel's terminal block. Be sure the correct wires are aligned with the proper input positions.



8	GND
7	ZONE 2
6	ZONE 1
5	BELL -
4	BELL +
3	GND
2	PWR -
1	PWR +

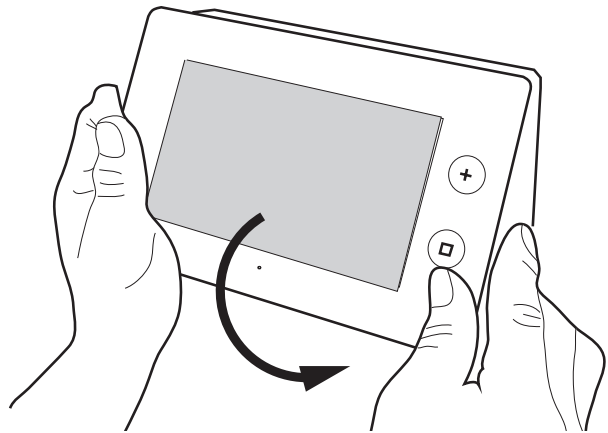
Re-attach the 2-Conductor Power Wires (if in use)

-OR-

6. Un-hinge the panel from the THIRD HAND.

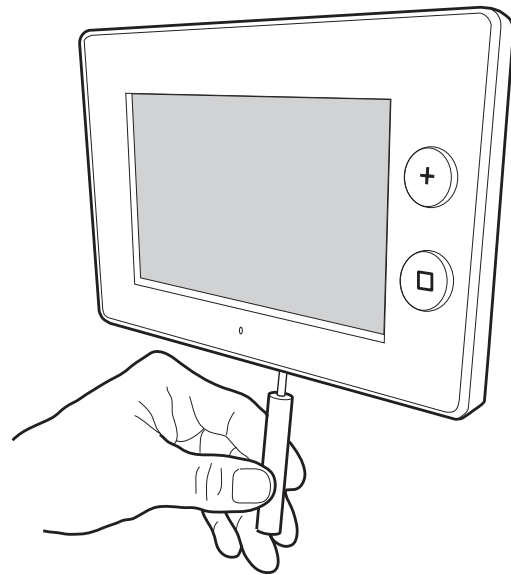
7. Align the panel with the backplate over the top two clips, and then rest the panel on clips.

- a. Check that any wires or barrel connector cables are properly routed, so they are not preventing the panel from reattaching to the backplate.
- b. Push panel downward into place until it clicks securely attached to the wall mounting plate.
- c. Re-secure the locking screw on the bottom of the panel.
- d. If Barrel connection was used, reattach power supply to the outlet.



8. **WALK TEST RECOMMENDED:** It's recommended that you run a walk test on the panel to ensure that all connections and functions have been properly restored.

9. **UPDATE PANEL FIRMWARE:** If you haven't done so already, it's recommended that you update to the latest firmware in order to apply the latest features (for example, battery conditioning for prolonged battery usage).



## REFERENCES

For instruction guides on control panel use, programming guides or other available support material, visit [2gig.com/dealers](http://2gig.com/dealers).

## Disposal of The Old Battery

Please consult your local regulations and instructions regarding the disposal of Lithium Batteries. You can also locate your nearest E-waste disposal site which takes batteries to properly dispose of them. or contact your local solid waste or household hazardous waste program for more options.

- Do not dispose of Li-ion batteries with 'regular' waste.
- Do not crush, puncture or bend.
- Do not place large numbers of batteries together without proper segregation, as this presents an increased fire hazard.
- Do not expose batteries to water or humidity.
- Ensure lithium batteries are not exposed to high temperature or prolonged sunlight.
- Failure to do so can lead to batteries rupturing or causing further damage.



Technical support: 1-707-283-5900 • 1-800-472-5555

Contact: [www.2gig.com](http://www.2gig.com) • Dealers: [2gig.com/dealers](http://2gig.com/dealers)



©2021 Nortek Security & Control LLC. All rights reserved. 2GIG is a registered trademark of Nortek Security & Control LLC.  
Nortek Security & Control LLC. 5919 Sea Otter Place, Suite 100, Carlsbad, CA 92010 USA

10032643 Rev-A